

# HONDA NC50

## express

OWNER'S MANUAL

## IMPORTANT NOTICE

- OPERATOR ONLY. NO PASSENGERS.

This motorcycle is designed and constructed as an operator only model. The seating configuration does not safely permit the carrying of a passenger. Do not exceed the vehicle capacity load limit shown on the tire information label.

- ON-ROAD USE ONLY.

This motorcycle is designed and constructed for use on public streets and roads. Off-road operation is not recommended.

- READ OWNER'S MANUAL CAREFULLY.

*All information in this manual is based on the model for the U. K.*

*All information, illustrations, directions and specifications included in this publication are based on the latest product information available at the time of approval for printing. HONDA MOTOR CO., LTD. reserves the right to make changes at any time without notice and without incurring any obligation whatever.*

*No part of this publication may be reproduced without written permission.*

## PREFACE

This booklet is your guide to the basic operation and maintenance of your new motorcycle.

Please take the time to read the Owner's Manual carefully. As with any fine machine, proper care and maintenance are essential for trouble-free operation and optimum performance.

Your authorized Honda dealer will be glad to provide further information or assistance and is fully equipped to handle your future service needs.

Thank you for selecting a Honda. We wish you many miles of continued riding pleasure in the years ahead.

*In this manual statements preceded by the following words are of special significance:*

**WARNING** means that there is the possibility of personal injury to yourself and others.

**CAUTION** means that there is the possibility of damage to the vehicle.

**NOTE** indicates points of particular interest for more efficient and convenient operation. We recommend that you take particular notice of these items when reading this manual.

## MOTORCYCLE TRAFFIC SAFETY

**A motorcycle is only as safe as its operator.**

The safe rider will spend much time learning to ride and developing his riding skills in an uncongested area before venturing into traffic.

1. In many motorcycle traffic accidents, the automobile driver does not see the motorcyclist in time to avoid an accident. The motorcyclist can make other motorists more aware of his presence by:
  - \* Wearing brighter, more visible clothing.
  - \* Avoiding the "blind spot" of other vehicles and driving defensively.
2. Many motorcycle accidents occur at intersections, parking lot entrances, exits, and driveways. The motorcyclist must show extra caution at these locations.
3. Excessive speed is a factor in many motorcycle accidents. Obey the speed limits and NEVER travel faster than conditions warrant.
4. Many motorcycle accidents involve inexperienced riders. A new motorcyclist should thoroughly familiarize himself with his motorcycle before attempting to ride on public roads. NEVER lend your motorcycle to an inexperienced rider.
5. Most fatal motorcycle accidents are due to head injuries. The motorcyclist should ALWAYS wear a helmet. He should also wear other protective apparel including eye protection, boots, gloves, and heavy clothing.
6. This machine is designed for speeds up to 40 km/h (25 mph).  
Operation on roads where other vehicles are traveling at greater rates of speed is not advisable and requires special care and driving safety.
7. Avoid hitting road hazards such as sharp bumps and holes in the road surface. These hazards can cause loss of control or structural damage to the vehicle.

# CONTENTS

SERIAL NUMBER LOCATION . . . . .	5
CONTROL LOCATION . . . . .	6
U. K. Model . . . . .	6
Australia and New Zealand Models . . . . .	7
OPERATING INSTRUCTIONS . . . . .	8
Ignition Switch . . . . .	8
Speedometer and Indicator Light . . . . .	8
Headlight Switch . . . . .	9
Headlight Dimmer Switch and Horn Button . . . . .	10
Turn Signal Switch (Australia and New Zealand type models only) . . . . .	10
Fuel Valve . . . . .	11
Filler Cap Vent Lever . . . . .	11
PRE-RIDING INSPECTION . . . . .	12
Gasoline Level . . . . .	12
Oil Level . . . . .	13
Brakes. . . . .	14
Battery Electrolyte . . . . .	17
Tire Pressure . . . . .	19
Electrical Equipment . . . . .	20
Throttle. . . . .	24
Fuse . . . . .	25
STARTING THE ENGINE . . . . .	26
RIDING THE MOTORCYCLE . . . . .	30
BRAKING . . . . .	32

SHUTTING OFF THE ENGINE . . . . .	34
PARKING . . . . .	35
SAFE RIDING SUGGESTIONS . . . . .	36
TRANSPORTING THE MOTORCYCLE . . . . .	37
LOADING . . . . .	38
MAINTENANCE SCHEDULE . . . . .	39
WHEEL REMOVAL . . . . .	42
SPECIFICATIONS . . . . .	45
WIRING DIAGRAM . . . . .	48

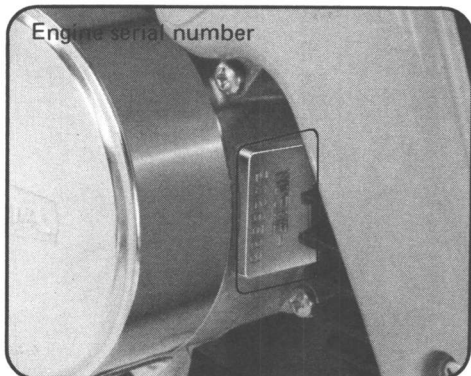
## SERIAL NUMBER LOCATION

Frame serial number



The frame serial number is stamped on the right side of the steering head. The engine serial number is stamped on the right side of the crankcase near the generator cover. These serial numbers are required when registering the motorcycle.

Engine serial number



Refer to frame and engine serial numbers when ordering replacement parts to ensure that you will obtain the correct parts for your model series.